



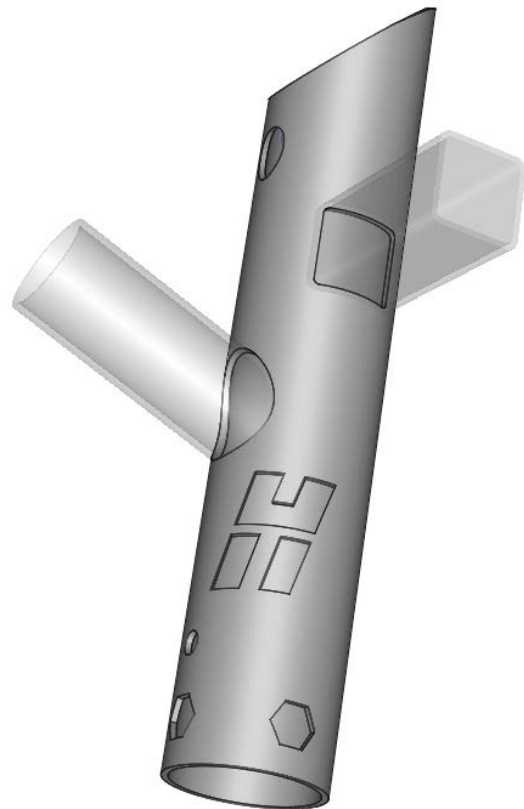
Rotary Tube Pro™

Tube cutting software | v2

An easier way to design and cut tubes

Rotary Tube Pro offers a complete design and cut solution for tube and pipe parts in mechanized cutting applications including plasma, laser, waterjet, and oxyfuel. There is no 3D CAD experience required. Tubes and branches are easily created using parametric input. Side-wall cut outs can be selected from a list of pre-defined shapes, or added from CAD. And, if necessary, users can import 3D CAD files. This flexibility allows fabricators and manufacturers to work more efficiently, boost productivity, and reduce operating costs.

In addition, Rotary Tube Pro supports virtually all brands of tube cutting machine, including stand-alone units and cutting table add-ons. It supports perpendicular cutting as a standard feature and bevel cutting as an optional module.



Also, Rotary Tube Pro is the only rotary software with full support for Hypertherm SureCut™ technology, including True Hole®, which is delivered automatically without operator intervention, and bevel cut charts based on True Bevel™ technology, which greatly reduce bevel set up time.

Finally, Rotary Tube Pro is backed by Hypertherm's global network of professionals, meaning you'll always have access to the service and support you need.

Standard feature highlights

Cut process support

- Plasma (conventional or high definition)
- Laser (CO₂, fiber, or direct diode)
- Waterjet
- Oxyfuel

Machine support

- All major brands/manufacturers/models
- Stand-alone units and cutting table add-ons

Part creation and development

- Create round or rectangular tube parts with parametric input
- Standard tube sizes and schedule pipe parameters (including wall thickness, corner radius, etc.) are provided for common materials, or input your own custom sizes
- 3D model of tube is updated in real time as you work, can be freely moved and rotated
 - 2D layout view is also available
- Branches can be added to define interiors using standard or custom tube sizes
 - Set branch intersection type: front outer, front inner, pass-through
 - New main tubes can be created from existing branches

Standard feature highlights, continued

- Cutouts can be added to define interiors, including layout arrays in rectangular and polar orientation
 - Select cutouts from a list of commonly used parametric shapes
- Support for a variety of end cuts
 - Straight
 - Miter
 - Pipe intersection
- Edit lead-in/out position and properties
- Control cut direction and cut sequencing on a part-by-part basis

CAD/CAM import and conversion

- Import DXF files to use as cutouts, allowing interiors of virtually any shape
- Import DXF text for cutting
- STEP file import for 3D CAD

SureCut™ technology and built-in process expertise

- True Hole® technology capable*
- Automated job set up on the EDGE® CNCs
- Material type, thickness and class-based process parameters:
 - Separations for cutout and pierce spacing
 - Kerf compensation and feedrate
 - Lead-in/out
 - Cutting techniques
- Cut sequencing – automatic or manual
- Automatic tabbing/micro-joints
- Ability to cut without rotation

*Certain hardware and software requirements may apply.

Reporting

- Report containing detailed job information and 3D part graphics
- Export report directly to PDF

Output

- Advanced post-processor, for perpendicular cutting, with NC output
- Scribe support
- DXF output

Optional module

- Rotary Bevel Interface (includes one Rotary Bevel Machine Post Processor)

For users operating a cutting machine equipped with a programmable bevel head, the Rotary Bevel Interface provides a seamless solution for creating the desired NC output. It generates a 3D model with true intersecting branch angles and end cuts. It allows for weld prep cuts to be added, and supports output of multi-axis, machine specific, bevel code.

Request a free trial at: www.hypertherm.com/CAM

Hypertherm, Rotary Tube Pro, SureCut, True Hole, True Bevel, and EDGE are trademarks of Hypertherm Inc. and may be registered in the United States and/or other countries. All other trademarks are the properties of their respective owners.

Environmental stewardship is a core value of Hypertherm. Our products are engineered to meet and exceed global environmental regulations including the RoHS directive.



© 10/2016 Hypertherm Inc. Revision 3

895910

Hypertherm[®]
SHAPING POSSIBILITY™

